

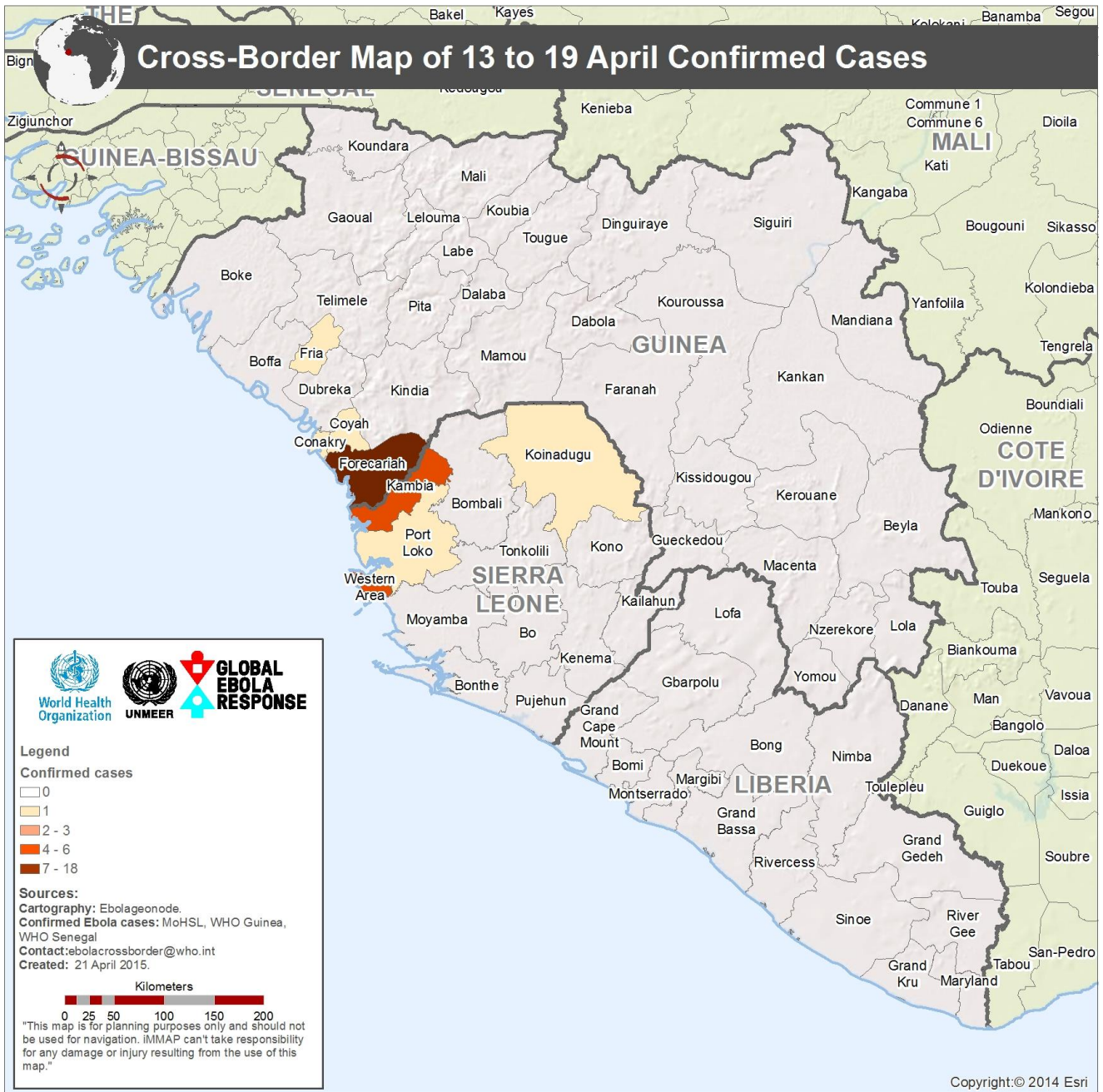
# Cross- Border Bulletin

20/04/2015

Week 16

## Confirmed New Cases in Ebola-Affected Countries

	Week			Mon	Tues	Wed	Thurs	Fri	Sat	Sun	Total
	13	14	15	13/04	14/04	15/04	16/04	17/04	18/04	19/04	Week
<b>GUINEA</b>	<b>57</b>	<b>21</b>	<b>28</b>	7	2	2	2	2	3	3	<b>21</b>
BOFFA	2	0	1	0	0	0	0	0	0	0	0
CONAKRY	19	8	6	0	0	0	0	0	1	0	1
COYAH	8	1	3	0	1	0	0	0	0	0	1
DUBREKA	3	1	0	0	0	0	0	0	0	0	0
FORECARIAH	20	6	17	7	0	2	2	2	2	3	18
FRIA	0	4	1	0	1	0	0	0	0	0	1
KINDIA	3	1	0	0	0	0	0	0	0	0	0
SIGUIRI	2	0	0	0	0	0	0	0	0	0	0
<b>LIBERIA</b>	<b>0</b>	<b>0</b>	<b>0</b>								
MONTERRADO	0	0	0								
<b>SIERRA LEONE</b>	<b>25</b>	<b>9</b>	<b>9</b>	1	2	3	2	1	2	1	<b>12</b>
BOMBALI	1	0	0	0	0	0	0	0	0	0	0
KAMBIA	5	2	4	1	1	0	0	0	1	1	4
KOINADUGU	0	0	0	0	0	0	0	1	0	0	1
PORT LOKO	6	1	1	0	1	0	0	0	0	0	1
WESTERN	13	6	4	0	0	3	2	0	1	0	6
<b>GRAND TOTAL</b>	<b>57</b>	<b>21</b>	<b>37</b>	<b>8</b>	<b>4</b>	<b>5</b>	<b>4</b>	<b>3</b>	<b>5</b>	<b>4</b>	<b>33</b>



# Cross-Border Meetings

## April 2015

SUNDAY	MONDAY	TUESDAY	WEDNESDAY	THURSDAY	FRIDAY	SATURDAY
<u>April</u>			1	2 <b>Kambia and Forechariah</b> (Pamelap)	3	4
5	6	7	8	9	10	11
12	13	14	15	16	17	18
19	20	21 <b>Kambia and Forechariah</b> (Pamelap)	22	23	24	25 <b>Koinadugu and Faranah</b> (Faranah, Guinea)
26 <b>Koinadugu and Faranah</b> (Faranah, Guinea)	27 <b>Koinadugu and Faranah</b> (Faranah, Guinea)	28	29	30		