

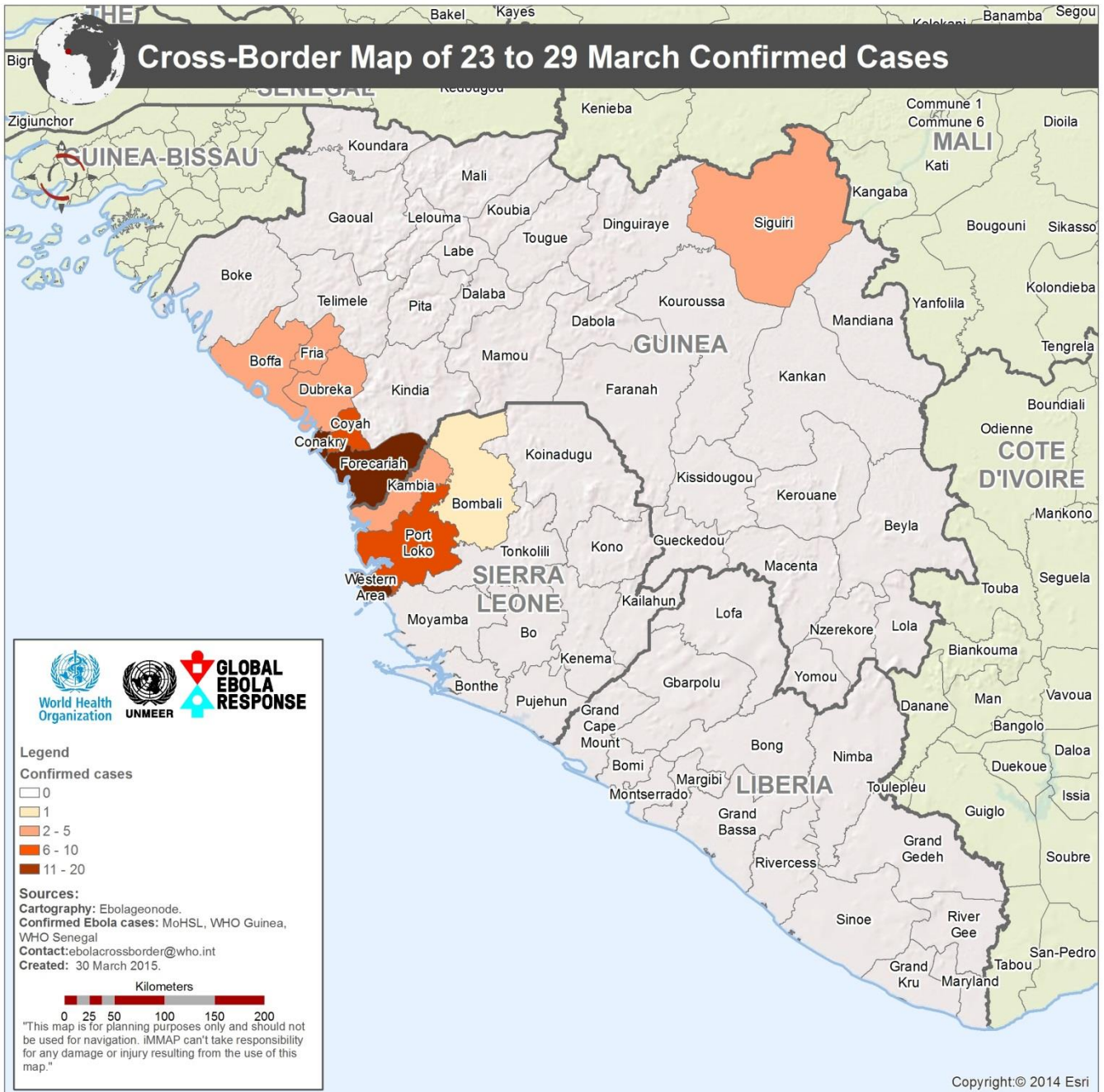
# Cross- Border Bulletin

30/03/2015

Week 13

## Confirmed New Cases in Ebola-Affected Countries

	Week			Mon	Tues	Wed	Thurs	Fri	Sat	Sun	Total
	10	11	12	23/03	24/03	25/03	26/03	27/03	28/03	29/03	Week
				13							
<b>GUINEA</b>	<b>58</b>	<b>95</b>	<b>45</b>	<b>12</b>	<b>9</b>	<b>10</b>	<b>12</b>	<b>3</b>	<b>4</b>	<b>7</b>	<b>57</b>
BOFFA	2	3	0	1	0	1	0	0	0	0	2
CONAKRY	13	25	11	3	5	0	6	1	2	2	19
COYAH	8	20	6	2	0	1	3	1	1	0	8
DUBREKA	5	3	0	0	0	2	0	0	0	1	3
FORECARIAH	28	42	28	6	4	6	1	1	1	1	20
FRIA	0	0	0	0	0	0	0	0	0	3	3
KINDIA	2	3	0	0	0	0	0	0	0	0	0
SIGUIRI	0	0	0	0	0	0	2	0	0	0	2
LIBERIA	<b>0</b>	<b>0</b>	<b>1</b>	<b>0</b>	<b>0</b>	<b>0</b>	<b>0</b>	<b>0</b>	<b>0</b>	<b>0</b>	<b>0</b>
MONTSERRADO	0	0	1	0	0	0	0	0	0	0	0
<b>SIERRA LEONE</b>	<b>58</b>	<b>55</b>	<b>33</b>	<b>8</b>	<b>1</b>	<b>3</b>	<b>3</b>	<b>4</b>	<b>2</b>	<b>4</b>	<b>25</b>
BOMBALI	6	6	1	0	0	0	0	1	0	0	1
KAMBIA	7	4	8	0	1	2	1	1	0	0	5
KOINADUGU	0	2	0	0	0	0	0	0	0	0	0
PORT LOKO	12	11	6	4	0	0	0	0	0	2	6
MOYAMBA	0	0	1	0	0	0	0	0	0	0	0
WESTERN	33	32	17	4	0	1	2	2	2	2	13
<b>GRAND TOTAL</b>	<b>116</b>	<b>150</b>	<b>79</b>	<b>20</b>	<b>10</b>	<b>13</b>	<b>15</b>	<b>7</b>	<b>6</b>	<b>11</b>	<b>82</b>



# Cross-Border Meetings

## March 2015

SUNDAY	MONDAY	TUESDAY	WEDNESDAY	THURSDAY	FRIDAY	SATURDAY
<u>March 1</u>	2	3	4	5 <b>Nzerekore- Nimba</b>  (Nimba County, Liberia)	6	7 <b>Forecariah- Kambia</b>  (Kambia, Sierra Leone)
8	9	10	11	12	13	14
15	16	17	18	19 <b>Sigui et Kangaba</b>  (Sigui, Guinea)	20	21
22	23	24	25	26	27	28
29	30	31				