



# *Sub-Regional Ebola Recovery Strategy*

**Mano River Union  
Secretariat**

---



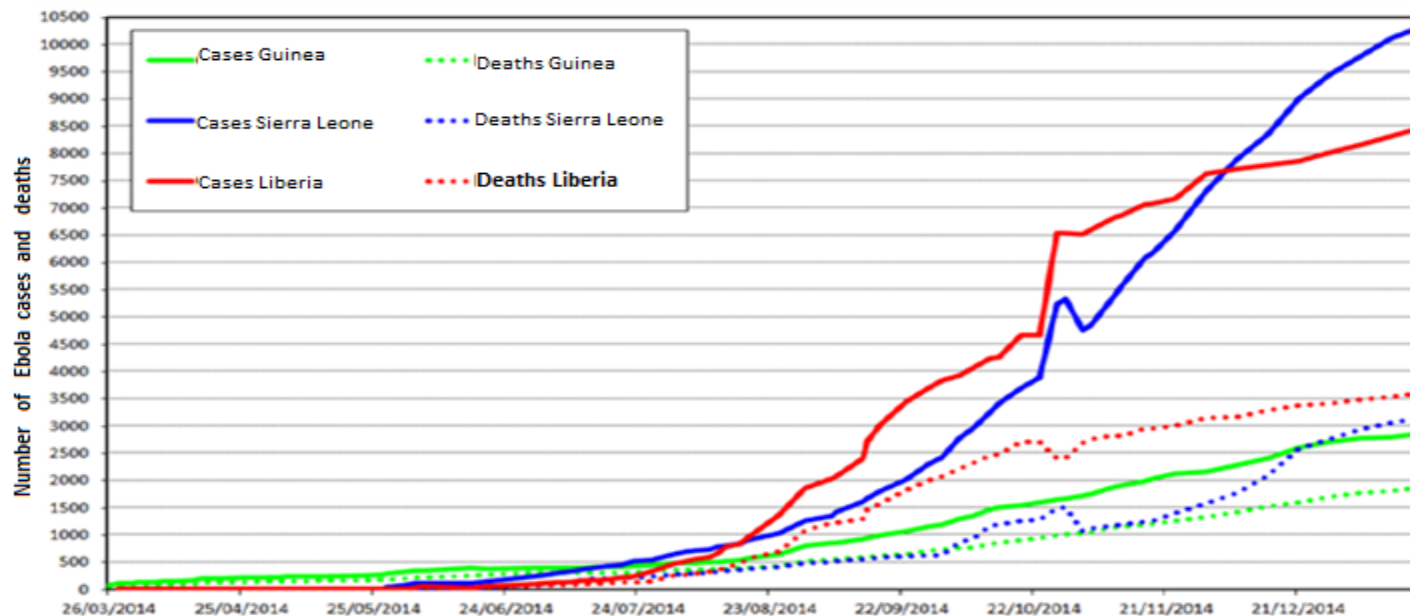


## SECTION 1

# IMPACT OF THE CRISIS

# Human consequences of the crisis

## ○ No of Victims / Survivors



	MRU Member States			Total
	Guinea	Liberia	Sierra Leone	
<b>Cumulative Cases</b>	3,643	10,666	12,816	27.125
<b>Cumulative Deaths</b>	2,422	4,806	3,911	11,139
<b>Fatality rate</b>	62%	45%	31%	46%
<b>Cumulative Health Care Worker Deaths</b>	100	192	222	514

# Human consequences of the crisis

Table 1 : Cumulative confirmed cases by sex and age group

Country	Cases by Sex		Cases by Age Group		
	Male	Female	0-14	15-44	46+
Guinea	1546	1597	497	1833	828
Liberia	1911	1838	561	2060	709
Sierra Leone	4641	4928	1904	5454	2062
Total	8098	8443	2962	9347	3593

# Human consequences of the crisis

Indicators	MRU Member States			Total
	Guinea	Liberia	Sierra Leone	
Cumulative Cases	3,643	10,666	12,816	27,125
Cumulative Deaths	2,422	4,806	3,911	11,139
Survivors	1,221	5,860	8,905	15,986

# Impact on the social sectors

## **Education Sector**

- prolonged school closures –exacerbated already poor sector indicators
- Increased teenage pregnancies

## **Social protection**

- Large numbers of children orphaned
- Hundreds of women widowed.
- Vulnerable groups face additional hardships (elderly, disabled etc.)

## Impact on the social sectors

Country	Severely food insecure Nov 2014	Food insecure due to EVD Nov 2014
Liberia	630,000	170,000
Sierra Leone	450,000	120,000
Guinea	970,000	230,000

Source: WFP estimates.



# Impact on economic sectors

## Macro economic Impact

- ◉ The total fiscal impact of the outbreak on the sub-region amounted to about US\$328 million (2.4 percent of sub-regional GDP).
- ◉ Short-term impacts for the individual States:
  - ◉ Liberia; -US\$113 million (5.1 percent of GDP)
  - ◉ Sierra Leone- US\$95 million (2.1 percent of GDP)
  - ◉ Guinea -US\$120 million (1.8 percent of GDP)

# Impact on economic sectors

## **Mining:**

- Reduction –especially in artisanal and small scale mining

## **Trade and Private Sector**

- private sector enterprises including those engaged in cross border trade = severely affected

## **Tourism and Hospitality**

- Severely affected as many expats left the region

## **Air and Sea Transport**

- Negatively affected as most airlines suspended operations further affecting trade, manufacturing, and the general economy of the sub-region.

## **Construction and Public Infrastructure Projects**

- Disrupted and suspended implementation of vital public infrastructure projects. At the MRU level, AfDB -MRU initiative & West African Power Pool Project came to a standstill .

# Impact on economic sectors;

## Agriculture:

- Reduction in yields

Country	Reduction in Production due to Ebola, '000 t	Value of production loss, Mill. USD 1/
Rice		
Liberia	24	10
Sierra Leone	100	43
Guinea	55	23
Cassava		
Liberia	19	2
Sierra Leone	37	4
Guinea	4	0.4
Maize		
Sierra Leone	2	0.3
Guinea	24	4

Source: FAO estimates.



## **Section II**

# **The Sub-Regional Ebola Recovery Plan**

## Rationale for the Plan

- Epidemic exposed limited capacity of national and sub-regional systems.
- Maintaining Zero will also require the leverage of joint action to build resilience for future emergencies and ensuring sustainable development in specific growth zones along the borders.

# Objectives of the Plan

The strategic objectives of the programme are to:

- Harmonize the approaches for tackling Ebola-type threats especially emanating from the border zones or of a cross-border nature, in achieving the state of zero new infection;
- Institute policies, actions and programmes to correct weaknesses at the sub regional level that have been revealed by the outbreak, essential for rebuilding a more resilient sub region;
- Highlight current or planned initiatives within the MRU that could be re-prioritized to buttress the regional recovery efforts;

# Objectives of the Plan(cont)

- Accelerate implementation of programmes that will support the sub-region to deal more effectively with future shocks of the Ebola type;
- Implement programmes that mitigate the impacts of the EVD Crisis on the affected population in the sub-region;
- Enable MRU Member States restore economic growth potentials, and exploit available opportunities to enhance inclusive economic growth and development within the sub-region;



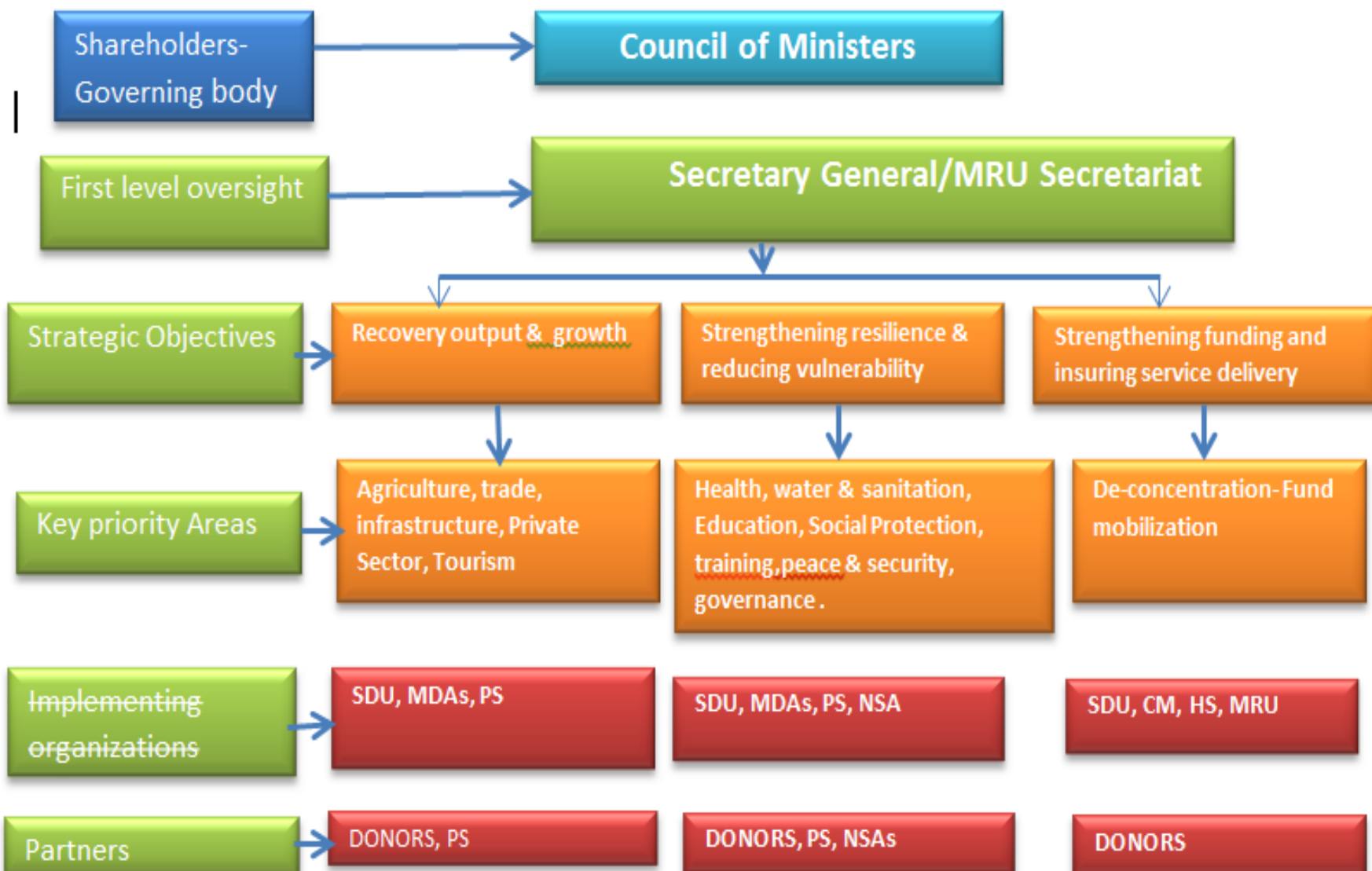
## **Section III**

**Strategic Priorities for  
the next 24 months**



# Implementation framework

M  
O  
N  
I  
T  
O  
R  
I  
N  
G



## Sub-regional Ebola Recovery Strategy Budget

SECTOR		Estimated Cost (US\$ 000)	Yearly Allocations (US\$ 000)		
			2015	2016	2017
<b>PRIORITY LEVEL 1</b>					
1	HEALTH, WATER, SANITATION AND HYGEINE	500,380	75,057	250,190	175,133
2	GOVERNANCE, PEACE AND SECURITY	139,850	20,978	69,925	48,948
3	AGRICULTURE, FISHERIES AND FOOD SECURITY	800,482	120,072	400,241	280,169
4	GENDER, YOUTH AND SOCIAL PROTECTION	231,000	34,650	115,500	80,850
5	PROGRAMME MANAGEMENT AND MONITORING	20,600	3,090	10,300	7,210
6	PRIVATE SECTOR SUPPORT PROGRAMME	65,150	9,773	32,575	22,803
<b>Priority Level 1 Sub-Total</b>		1,757,462	263,619	878,731	615,112
<b>PRIORITY LEVEL 2</b>					
7	ROADS PROGRAMME	574,638	86,196	287,319	201,123
8	ENERGY ACCESS PROGRAMME	1,321,262	198,189	660,631	462,442
9	INFORMATION & COMMUNICATIONS TECHNOLOGY (ICT)	346,640	51,996	173,320	121,324
<b>Priority Level 2 Sub-Total</b>		2,242,540	336,381	1,121,270	784,889
<b>PROGRAMME TOTAL</b>		4,000,002	600,000	2,000,001	1,400,001



THANK YOU

